

Child Print Digital Camera

operating instruction



Please read the instructions carefully before using this product

The specification is for reference only, and the specific operation is based on the object

Introduction

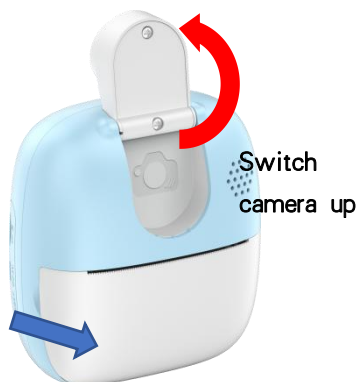
Welcome and thank you for choosing our products. In order to understand and use our products more quickly, it is recommended that you read this manual carefully before using it and keep it safe for future reference. Please abide by the warnings and matters needing attention in the specification, if there is any quotation error to hope that the majority of users understand, when the design content changes, without prior notice.

This product is a unique shape, exquisite design, children's digital camera with hd pictures, and has the printing function, designed for children's digital products, let children learn to use more imagination, experience the fun of nature, record the good time.

Key/ interface description



- 1 Settings
- 2 Return
- 3 Switch / breath screen
- 4 shutter /ok
- 5 Playback / game interface left key
- 6 Take a picture and print/playback screen Print/game screen right key
- 7 Up/Photo interface Long press to enlarge the image, short press to switch filter tack/Music interface long press to increase the volume, short press to switch the previous song
- 8 Down button/Camera interface long press to reduce the image, short press to change the filter tack/music interface long press to reduce the volume, short press to change the next song



The paper warehouse opens in the direction

Important Tips :

When you need to open the print head tray, needs to be scuttled in the direction indicated by the arrow, do not use brute force, so as not to damage the machine. When replacing the print paper, place the print side on the side of the print head.

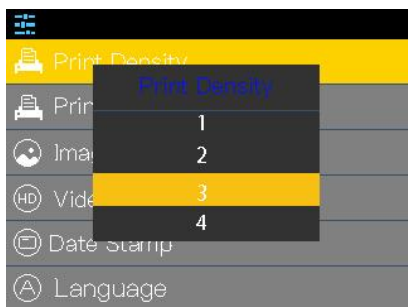
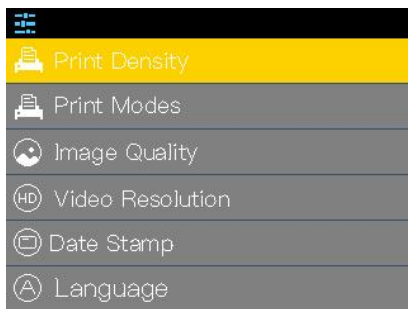
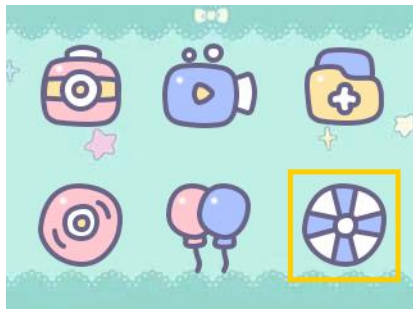
- ① Charging data port
- ② TF card



Important Tips : When the machine appears flower screen, abnormal crash and so on, can directly dial the hard power-on button to restart.

- ③ Charging
- ④ Hard boot

Print mode



1. Press up or Down from the main menu to select System Settings, or press [Settings] from the camera and video interface to enter system Settings.

2. Switch up and down, select the print concentration setting, press the shutter button to enter the setting, press the shutter button to confirm the selection.

When no TF is inserted into the device, press the Print button on the photo interface to print directly.

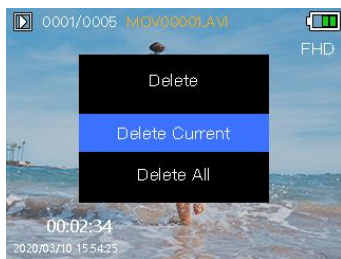
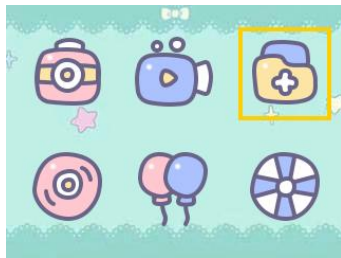
When the concentration setting option is small, the contrast of the printed image is weak. When the selection value is large, the contrast is strong. You can choose reasonably according to your needs.

Photo function



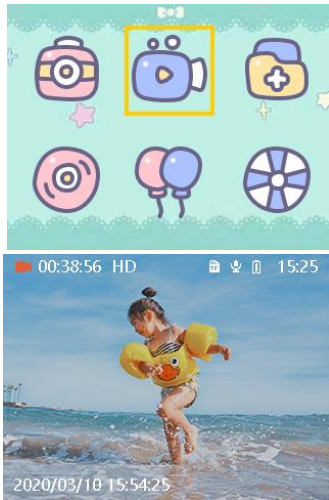
- 1 Plug in the TF card and press [switch] to power on the camera
- 2 Lower the key to narrow the image
- 3 Long press the up key to enlarge the image, long press the down key to reduce the image, short press the up and down key to switch the filter and tack
- 4 You can directly press the print button to take photos and print.

Delete photos or images



1. Plug in the TF card and press the [switch] key to start the camera;
 2. In the main menu, press the up or down key to select the browsing mode, press [Shutter] to enter, or directly press the playback key to enter the browsing mode in the main interface and the camera and video interface.
- Press the "up and down" key to switch the file view, press the "shutter" key to play/pause the video file, press the "print" key to print the picture file directly
4. Press [Set] to delete the file or delete all files. Press the back key to exit. Exercise caution when performing this operation.
 5. Press the Return key to return to the main screen

Video function



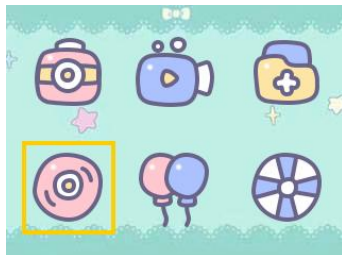
Plug in the TF card and press [Switch] button to start the camera

On the main screen, press the up/down key to select the recording mode, and press [shutter] to enter the recording

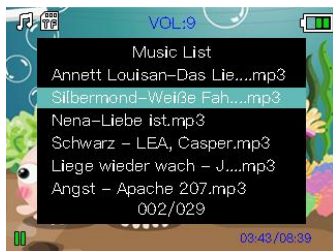
Short press the top [shutter] button to record

Press the shutter button to save the recording

MP3

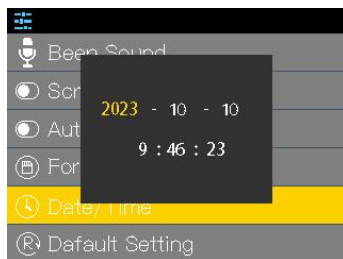
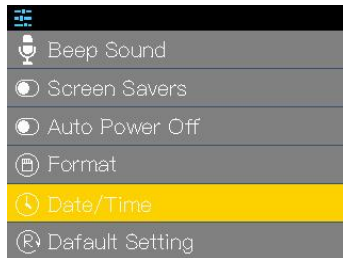


On the main screen, press the up/down key to select mp3 mode, and press [shutter] to enter mp3



Press the "Shutter" button to control music play or pause, short press the up and down arrow key to switch music, and long press the up and down arrow key to increase or decrease the volume. Press [Back] to exit music mode.

Date setting



1. Press Up or down on the home screen to select System Settings or press Settings on the camera and video screen to enter system Settings

2. Switch up and down, select the date and time, press the shutter button to set

3. After entering the time setting interface, press the "up and down Direction" key to change the corresponding number, press the "playback" key to switch to the next column, and press the "Shutter" key to confirm

parameter setting

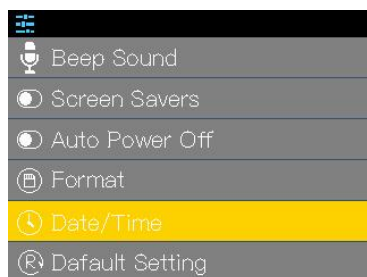
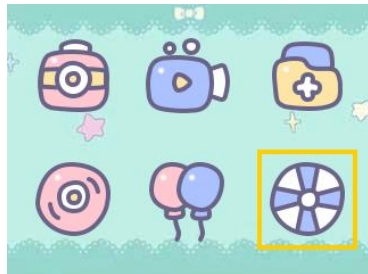


Photo size: Sets the image quality size

Date tag: Enabled to display the time on photos

Format: Clear the file

Key tone: The key tone can be turned on or off

1. Press up or Down on the home screen to select System Settings, or press Set on the camera and video screen to enter system Settings.

2. Switch up and down, select the corresponding function and press the "shutter" button to set

Language choice: Multiple languages are available

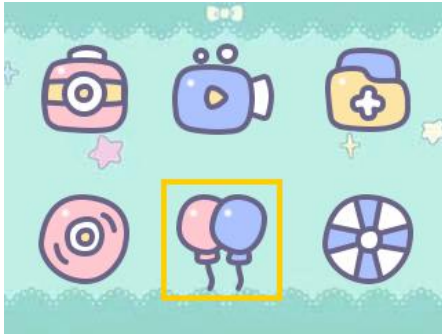
Automatic shutdown: Set the automatic shutdown time

Date time: Set the machine time

Software version: View the machine version number

Video format: Sets the resolution of video recording

Game mode



1. Press the up or down button on the home screen to select the game mode, and press the shutter button to enter the game selection screen

2. In game mode, press [up] [down] [Playback] [Print] to control movement up and down and left and right.

3. Press [Back] to return to the main screen

Break the bricks

Select the brick game and press the shutter button twice to enter the game. Press the playback key or print key to move the baffle left and right to start the game, and the ball can score when it lands on the baffle. Press to return and press the shutter button again to exit the game.

sokoban

Select the sokoban game and press the shutter button to enter, and press the return button to exit the game. Press playback key, print key, up arrow key and down arrow key to control the left and right movement of the villain, and push all boxes to the position of the ball to clear the customs.

maze

Press the shutter button to enter and the back button to exit the game. Press playback key, print key, up arrow key and down arrow key to control the movement of the white box, and move the white ball to the exit to clear the customs.

Gluttonous snake

Press the shutter button to enter and the back button to exit the game. Press the playback key, print key, upper arrow key, lower arrow key to control the snake around and up and down, the snake head touched the food can score, collision to the edge of the red wall game over.

Tetris

Press the shutter button to enter and the back button to exit the game. Press the playback key and print key to control the left and right movement of the box, press the up arrow key to change the shape of the box, press the arrow key to speed up the falling speed.

format

1. Press Up or down on the home screen to select System Settings or press Settings on the camera and video screen to enter system Settings
2. Switch to the "Format" option to press the "Shutter" button to format the operation;
3. Press the Back button to return to the main interface.

Attention: all the pictures and videos taken after formatting will be cleared,

Use with caution.

Charge

When the voltage is low or the electric quantity is too low for automatic shutdown, it is necessary to use the adapter for charging. The power adapter shall use the specified 7.4V/2200 mA, and any other type of adapter will be used at will to conflict with the product. The power indicator is red when charging, and the power indicator will be turned off after the charging is completed.

Maintenance and maintenance

This product should not be placed in wet environment for a long time, please wipe the surface stains with dry cloth. Wires, plug shells and other components must be regularly checked for damage, and damage should be stopped immediately until repaired. In addition, in order to reduce battery aging and swelling; If it is not used for a long time, it needs to be charged once every three months or so.

Attention!

Built-in 7.4 V battery can not be removed and replaced, if damaged should contact the service and repair. Chargers are used by adults or adults under the supervision of adults. Chargers are not toys and are used in 7.4V/2200mAh according to specifications. When cleaning this product, make sure that the charger is disconnected.

Warning!

1. Contains small parts, not suitable for children under three years of age!
2. Do not close to the fire source when playing!
3. The guardian should be watched by the child while the child is playing.